

Telpac Node / Frequency / Power

Telpac Node Callsign: W1AW-10
Frequency: 145.510
Power: 35W

Node Trustee: NJ1Q
Trustee's Email: NJ1Q@arrl.org
Website Information:

Antenna and Geography

Node Location: Newington, CT
Ground Elevation: 27M
GPS Coordinates: 41 42 52.8 72 43 37.9

County: Hartford
ARES / DEMHS Area: 3
Grid Square: FN31pq

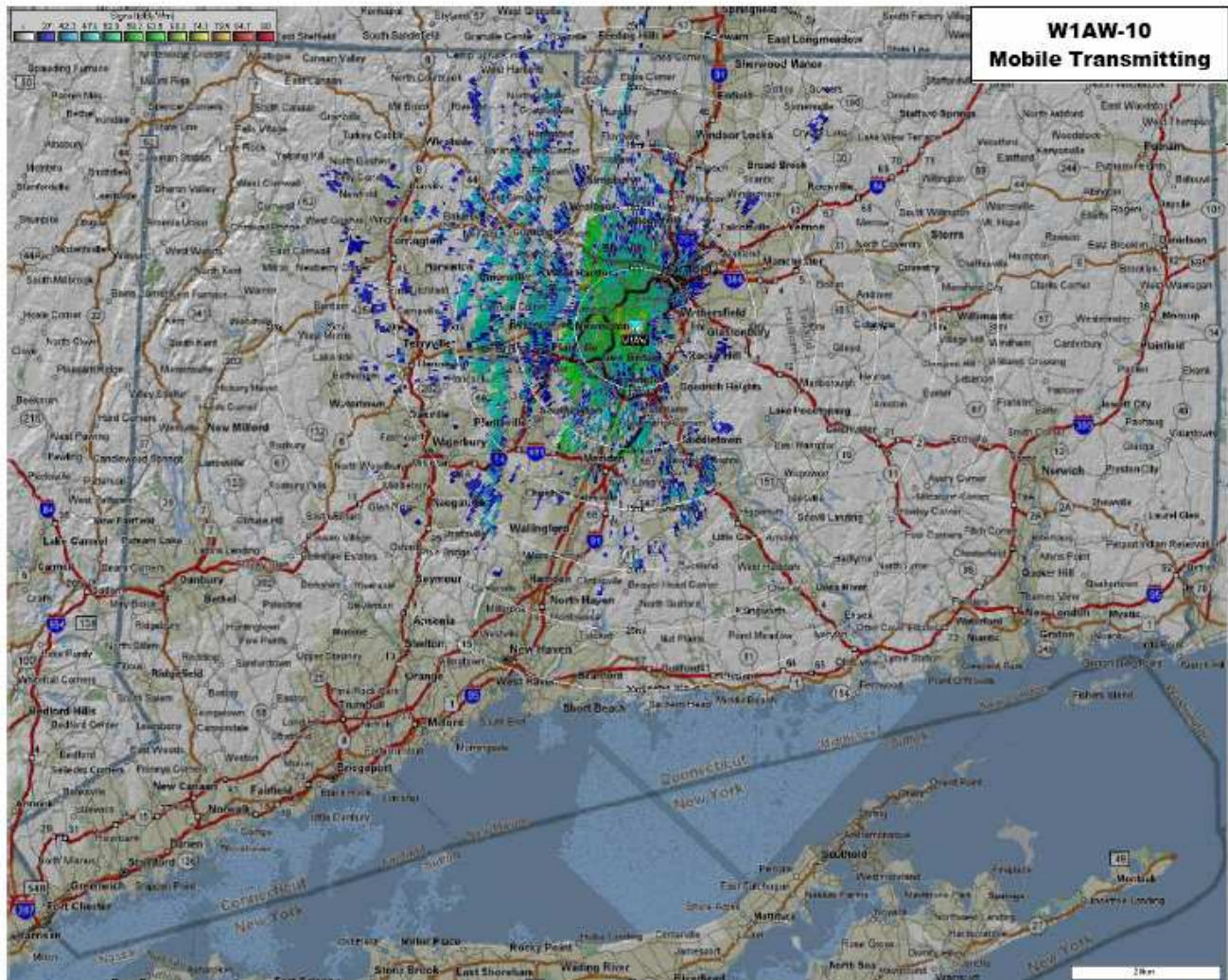
Antenna model: AEA Isopole – 2M
Antenna Height: 20"

Antenna Gain: 2.15
Antenna Pattern: Omni-Directional

Backup Power and Internet Service Provider

System on a UPS: Yes
Type of Backup Power: 6 Kilo Diesel
of hours / Days available on backup power: 5 hours
ISP: AT&T

Manual or Automatic: Auto



Telpac Node / Frequency / Power

Telpac Node Callsign: AB1CR-10
Frequency: 145.53
Power: 15 Watts

Node Trustee: Chuck Rexroad
Trustee's Email: ab1cr@comcast.net
Website Information:

Antenna and Geography

Node Location: Vernon, Box Mountain
Ground Elevation: 835'
GPS Coordinates: 41 48 00N : 72 27 21W

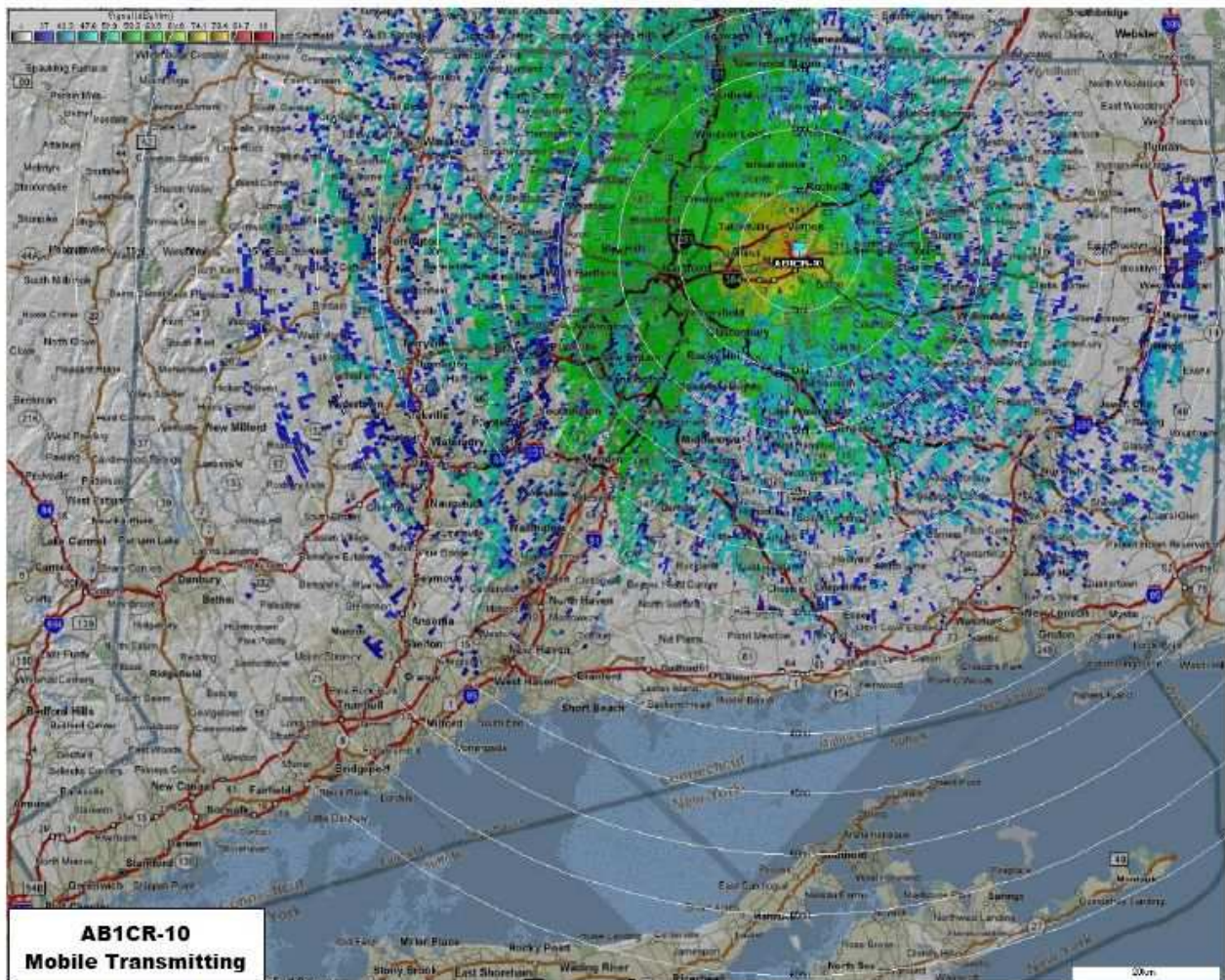
County:
ARES / DEMHS Area: 3
Grid Square: FN31st

Antenna model:
Antenna Height: 300'

Antenna Gain: 6db
Antenna Pattern: Cardio 240°

Backup Power and Internet Service Provider

System on a UPS: Yes
Type of Backup Power: Propane powered generator with automatic switchover
Manual or Automatic: Automatic
of hours / Days available on backup power: 1 week
ISP: AT&T



Telpac Node / Frequency / Power

Telpac Node Callsign: AB1CR-11
Frequency: 145.53
Power: 25W

Node Trustee: Chuck Rexroad
Trustee's Email: Ab1cr@comcast.net
Website Information:

Antenna and Geography

Node Location:
Ground Elevation: 800
GPS Coordinates: 41.774734 -72.438821

County:
ARES / DEMHS Region: 3
Grid Square:

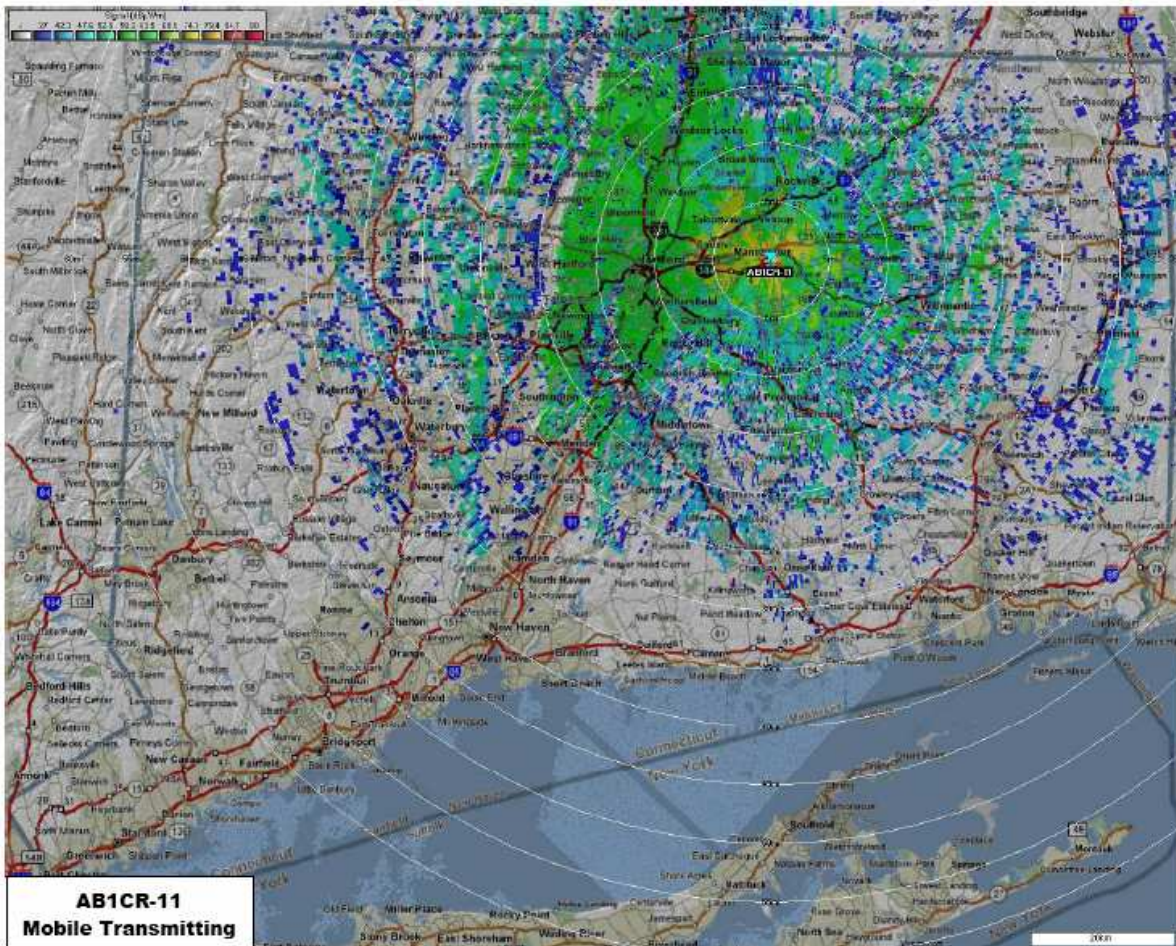
Antenna model: Ringo
Antenna Height: 25"

Antenna Gain: 3db
Antenna Pattern: Omni-Directional

Backup Power and Internet Service Provider

System on a UPS: Yes
Type of Backup Power: Gasoline Generator
of hours / Days available on backup power: 1 week
ISP: Comcast

Manual or Automatic: Manual



Telpac Node / Frequency / Power

Telpac Node Callsign: W1GTT-10
Frequency: 145.03
Power: 5

Node Trustee: William H. Covey
Trustee's Email: W1GTT@aol.com
Website Information:

Antenna and Geography

Node Location: East Lyme, CT
Ground Elevation: 170'
GPS Coordinates: 41.23.02N 072.13.42W

County: New London
ARES / DEMHS Area: REGION 4
Grid Square: FN41vj

Antenna model: ARROW J-Pole J146/440
Antenna Height: 25' in attic

Antenna Gain: 1.5 dBd
Antenna Pattern: Omni-Directional

Backup Power and Internet Service Provider

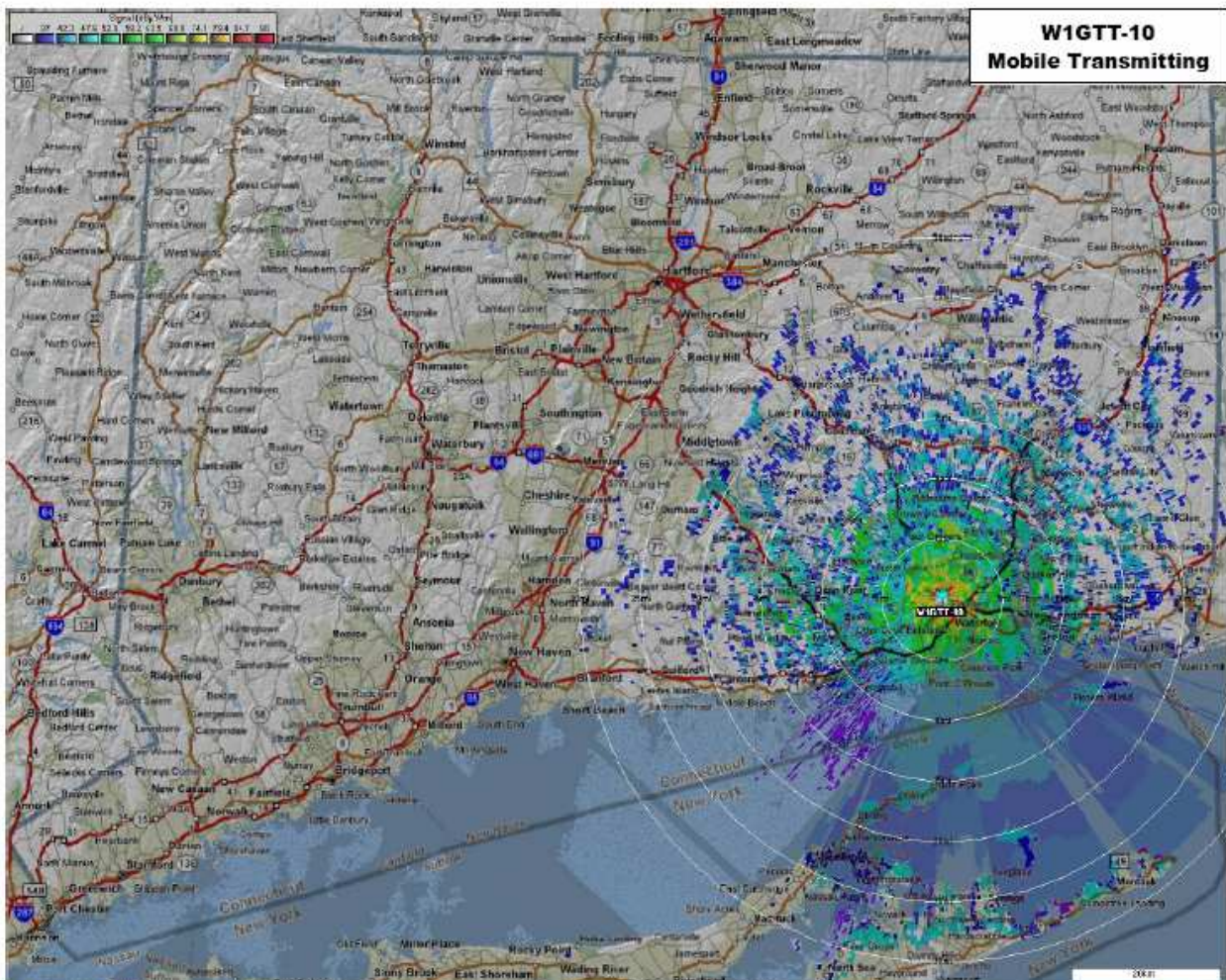
System on a UPS: Yes

Manual or Automatic: Auto to battery/ manual to generator

Type of Backup Power: Battery

of hours / Days available on backup power: ½hour before switching to a generator. On as long as fuel supply lasts

ISP: CT.Metrocast.net



Telpac Node / Frequency / Power

Telpac Node Callsign: W1WJB-10
Frequency: Agile
Power: 40W

Node Trustee: William Barrett
Trustee's Email: W1wjb@arrl.net
Website Information:

Antenna and Geography

Node Location: Portable – Mobile
Ground Elevation: n/a
GPS Coordinates: n/a

County: Deployable
ARES / DEMHS Area: Reg 5
Grid Square: n/a

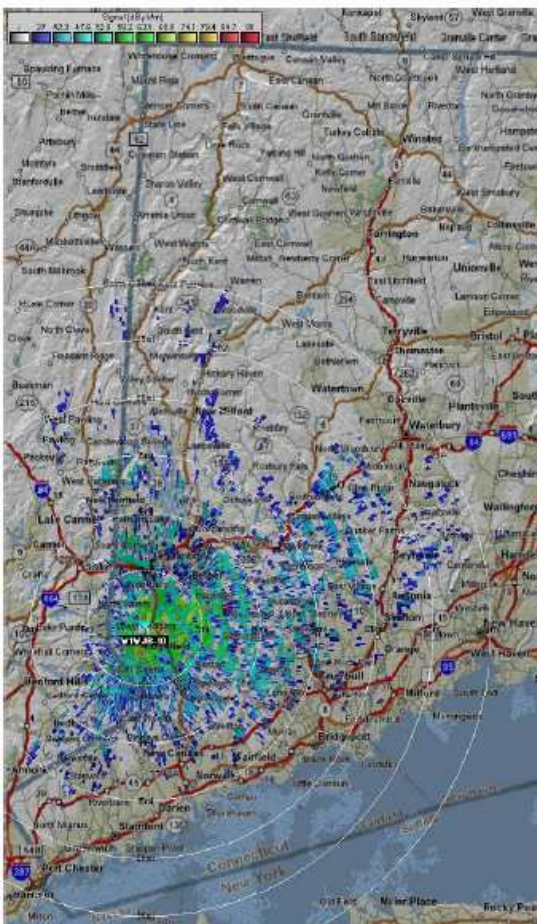
Antenna model: Field Deployable
Antenna Height: Tripod to 20 feet

Antenna Gain: 0 dB
Antenna Pattern: Omni-Directional

Can you access any other telpac nodes from this location? Don't know. Possibly.

Backup Power and Internet Service Provider

System on a UPS: Runs on 12v
Manual or Automatic: Auto
Type of Backup Power: On-board car genny or 12v from anywhere.
of hours / Days available on backup power: As long as the gasoline holds out.
ISP: Mags



AB1DO Sending

Telpac, Airmail, SSTV, RTTY, and AMTOR (and a few of the more oddball modes).

It also has Echolink on it and APRS with the "UI-View" software. It can work Telpacs, or BE a Telpac, and using either "Airmail" or "PK-Term for Windows" can also run

conventional packet. One of several radios can be used from an H-T to a mobile. The whole affair runs off 12 volts---including the computer.



All ready to go portable

Telpac Node / Frequency / Power

Telpac Node Callsign: KR1COM-10
Frequency: 145.51
Power: 40W

Node Trustee: William Barrett
Trustee's Email: W1wjb@arrl.net
Website Information:

Antenna and Geography

Node Location: Katonah Street, Ridgefield
Ground Elevation: 720
GPS Coordinates: 41.1690 x 73.3011

County: Fairfield
ARES / DEMHS Area: Reg 5
Grid Square: FN31gh

Antenna model: Groundplane
Antenna Height: 35 feet

Antenna Gain: 0 dB
Antenna Pattern: Omni-Directional

Can you access any other telpac nodes from this location? Don't know. Possibly.

Backup Power and Internet Service Provider

System on a UPS: Yes
Type of Backup Power: Triple: UPS, large batteries, then generator at firehouse
of hours / Days available on backup power: Municipal fire house. Endless.
ISP: Mags

Manual or Automatic: Auto

Telpac Node / Frequency / Power

Telpac Node Callsign: N1BDF-10
Frequency: 145.05
Power: 40W

Node Trustee: Jon Krijgsman
Trustee's Email: jonkrijgsman@yahoo.com
Website Information: none

Antenna and Geography

Node Location: Shelton
Ground Elevation: 590"
GPS Coordinates: N 41-18.43 W 73-10.92

County: Fairfield
ARES / DEMHS Area: Area 2
Grid Square: FN31JH

Antenna model: Diamond X-500HNA
Antenna Height: 70"

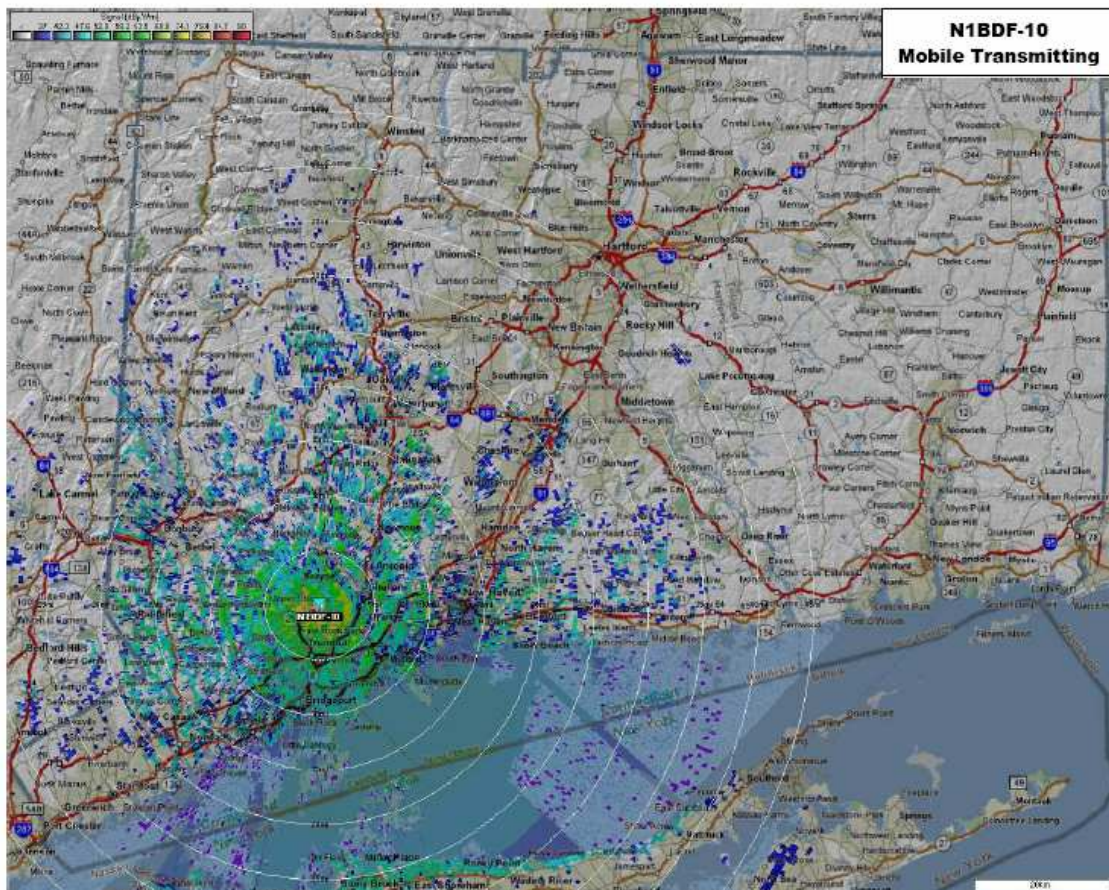
Antenna Gain: 8.3 db (from Diamond)
Antenna Pattern: Omni-Directional

Can you access any other telpac nodes from this location? Yes, AB1CR-10

Backup Power and Internet Service Provider

System on a UPS: Yes
Type of Backup Power: 200AH Batteries with float charge
of hours / Days available on backup power: 24 hrs. (estimated)
Manual or Automatic: Auto

ISP: AT&T DSL



Telpac Node / Frequency / Power

Telpac Node Callsign: N1MD-10
Frequency: 145.03
Power: 160

Node Trustee: Home station – N1MD
Trustee's Email: N1md@arrl.net
Website Information: n/a

Antenna and Geography

Node Location: Putnam, CT
Ground Elevation: 350'
GPS Coordinates: N 41.52.397
W 071.54.950
Antenna model: Diamond X-200A
Antenna Height: 25'

County: Windham
ARES / DEMHS Area: ARES Region 4 North
Grid Square: FN41bu
Antenna Gain: 6.0 dBi
Antenna Pattern: Omni

Backup Power and Internet Service Provider

System on a UPS: No
Type of Backup Power: n/a
of hours / Days available on backup power: n/a
ISP: Ct.metrocast.net

Manual or Automatic: n/a

