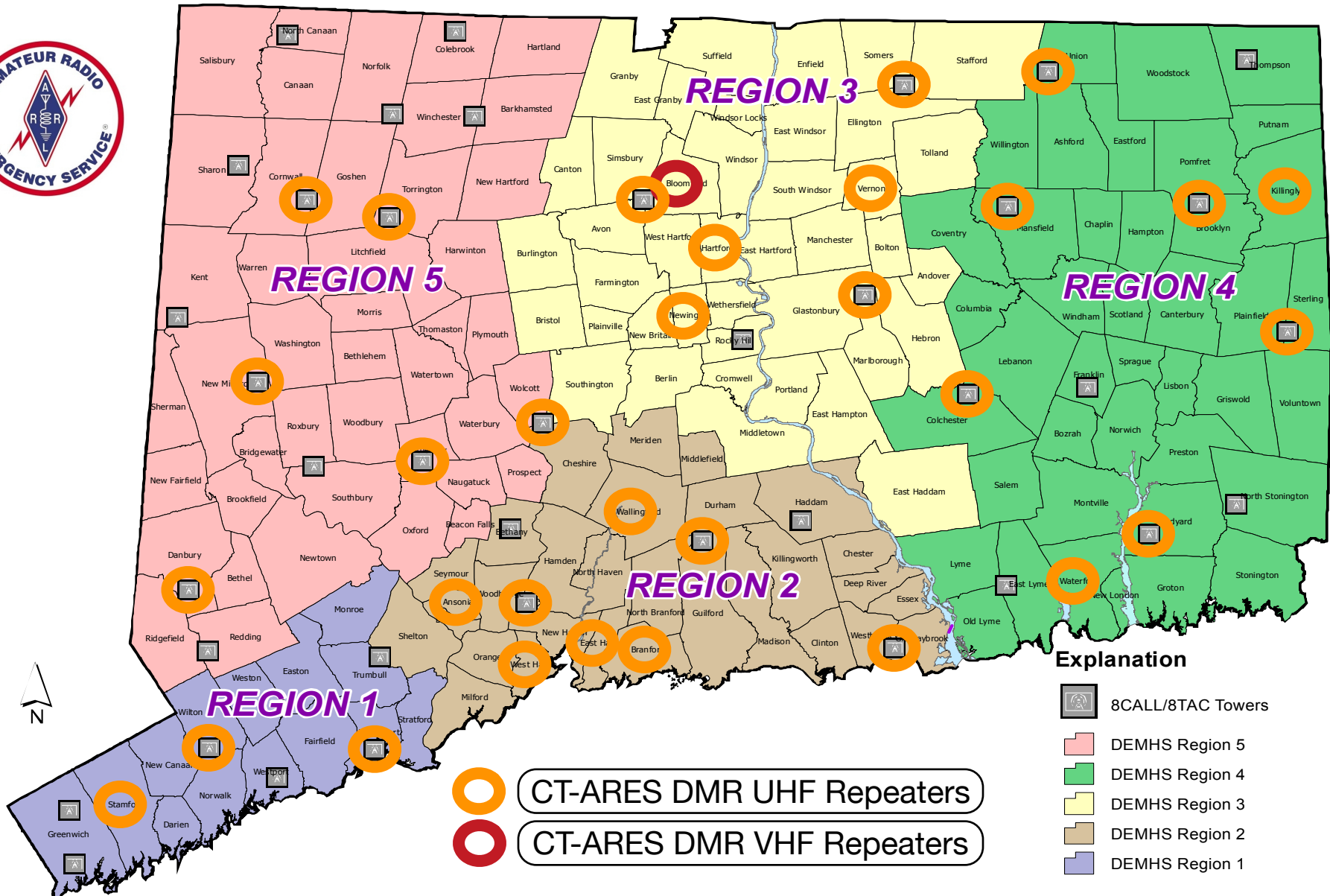


# CT-ARES DMR Repeater Network - 12 July 2017



## CT-ARES DMR Repeater Network

Location	Callsign	Frequency	Offset	CC	Notes
Ansonia	K1EIR	444.3500	+5 MHz	CC 2	
Bloomfield	W1SP	446.4375	-5 MHz	CC 1	
Bloomfield VHF	KB1TTN	145.4300	-0.6 MHz	CC1	Test Frequency
Branford	N1HUI	449.3250	-5 MHz	CC 1	
Bridgeport	N1TGE	440.7625	+5 MHz	CC 1	
Brooklyn	KB1NTA	445.7375	-5 MHz	CC 3	
Colchester	WH6SW	445.9875	-5 MHz	CC 1	
Cornwall	W1SP	444.3500	+5 MHz	CC 1	
Danbury	KX1EOC	445.7375	-5 MHz	CC 1	
East Haven	KA1MJ	449.8250	-5 MHz	CC 1	
Glastonbury	W1EDH	449.1250	-5 MHz	CC 1	
Guilford	W1SP	441.2625	+5 MHz	CC 1	
Hartford	W1SP	447.9750	-5 MHz	CC 1	
Killingly	K1MUJ	444.8000	+5 MHz	CC 1	
Ledyard	W1SP	449.2750	-5 MHz	CC 1	
Middlebury	WB1CQH	445.8375	-5 MHz	CC 2	
New Haven	KB1TTN	441.4625	+5 MHz	CC 1	
New Milford	NA1RA	440.9625	+5 MHz	CC 1	
Newington	W1AW	442.1000	+5 MHz	CC 1	
Somers	W1SP	445.8875	-5 MHz	CC 1	
Stamford	W1EE	447.1250	-5 MHz	CC 2	
Sterling	N1CLV	445.8375	-5 MHz	CC 1	
Storrs	W1JLZ	441.4625	+5 MHz	CC 2	
Torrington	W1HDN	441.5500	+5 MHz	CC 1	
Union	KB1NTA	443.8000	+5 MHz	CC 1	
Vernon	W1HDN	443.9500	+5 MHz	CC 1	
Wallingford	W1SP	442.0000	+5 MHz	CC 3	Portable Test
Waterford	W1NLC	448.9750	-5 MHz	CC 1	
West Haven	KB1TTN	449.9250	-5 MHz	CC 1	
Westbrook	WB1EOC	445.7375	-5 MHz	CC 2	
Wilton	W1SP	440.7500	+5 MHz	CC 1	
Wolcott	KB1TTN	440.8125	+5 MHz	CC 1	